

South Gloucestershire Landscape Character Assessment

Annex II: Strategic Viewpoints

South Gloucestershire Council

Final Draft Report for Adoption Chapter 21

Prepared by LUC

September 2024



Version	Status	Prepared	Checked	Approved	Date
1	Draft Method and Pilot	E White L Jewitt	K Davies	K Davies	03.04.2023
2	Draft Report	L Jewitt V Kakar	E White	K Davies	16.05.2023
3	Draft Report	E White L Jewitt	E White	K Davies	14.07.2023
4	Final Draft	E White L Jewitt	E White	K Davies	01.11.2023
5	Final Draft (updated following New Local Plan Phase 3 consultation)	L Jewitt	E White	K Davies	12.06.2024
6	Final Draft Report for Adoption	L Jewitt	E White	K Davies	11.09.2024



Land Use Consultants Limited

Registered in England. Registered number 2549296. Registered office: 250 Waterloo Road, London SE1 8RD. Printed on 100% recycled paper

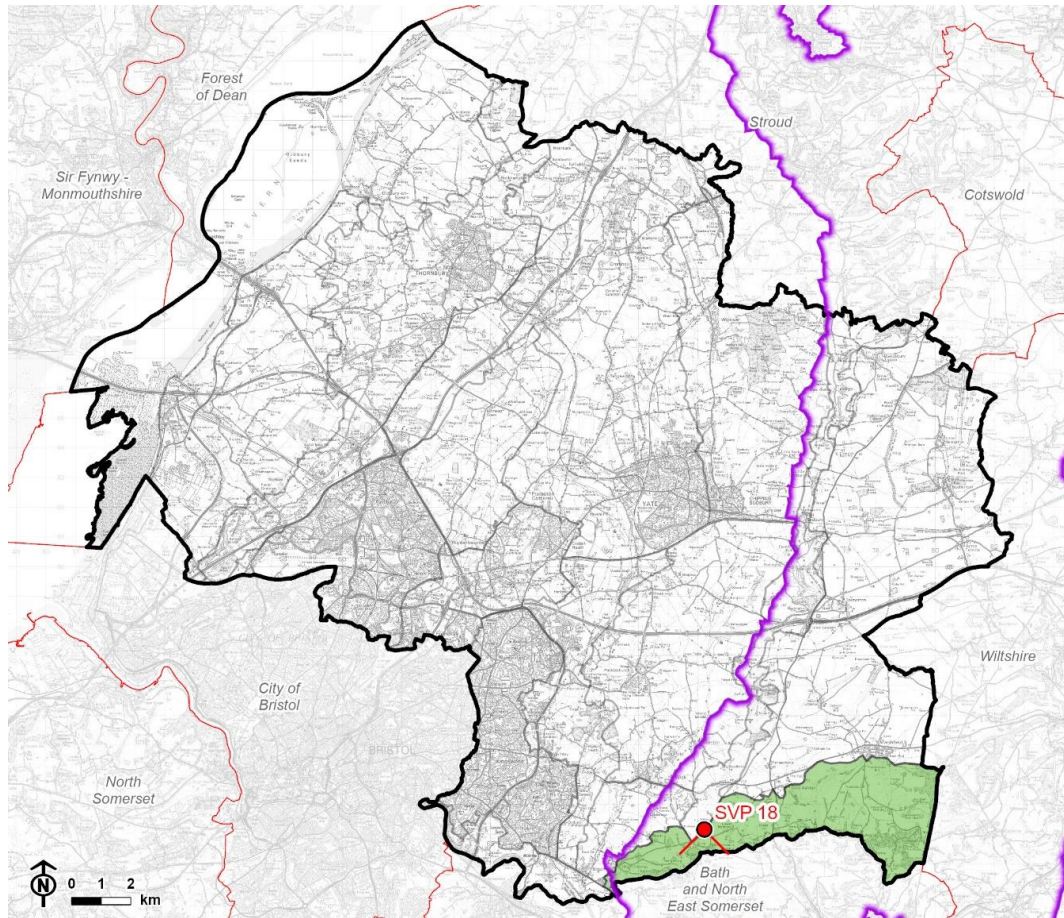
Contents

Chapter 21	153
Strategic Viewpoint 18: Freezing Hill	
Characteristics	158
Summary	159

Chapter 21

Strategic Viewpoint 18: Freezing Hill

Figure 21.1: Location of Strategic Viewpoint 18 and landscape character context

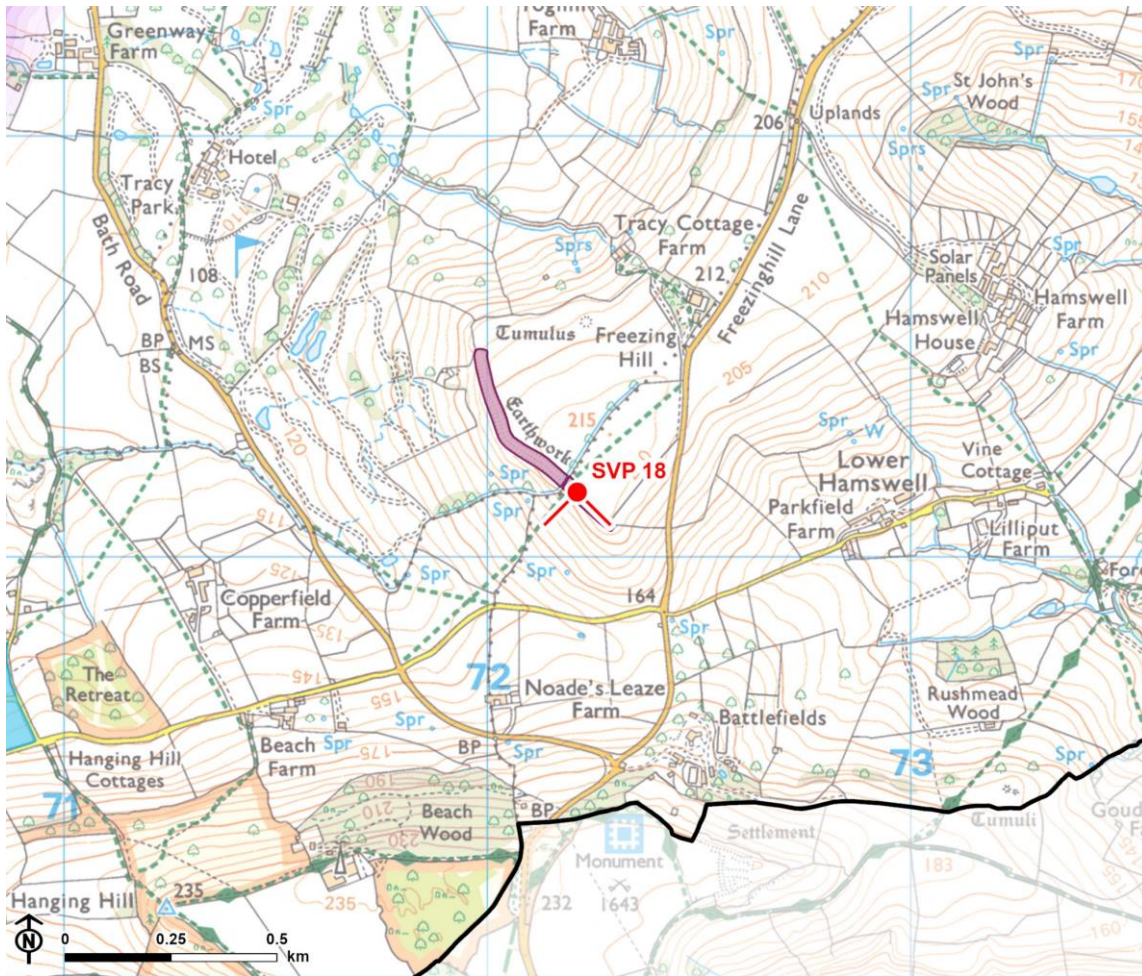


© Natural England copyright © Crown copyright and database rights, Ordnance Survey licence number 100023410 (2024).



CB:HS, EB:shayler_h LUC 12274_FiguresUpdates_MayJune2024 07/06/2024
Source: LUC, SGDC, NE, OS

-  Council boundary
-  Neighbouring local authority
-  Cotswolds National Landscape (AONB) boundary
-  LCA 3: Ashwicke Ridges
-  Strategic viewpoint and angle

Figure 21.2: Detailed map of the location of Strategic Viewpoint 18



© Natural England. © Historic England. Contains Ordnance Survey data © Crown copyright and database rights, Ordnance Survey licence number 100023410, 2024.

-  Council boundary
-  Cotswolds National Landscape (AONB) boundary
-  Conservation area
-  Scheduled monument
-  Strategic viewpoint and angle



Viewpoint Information

Grid reference: ST 72218 71155

View location: Adjacent to the linear earthwork on Freezing Hill, Wick.

View direction: South, east and south-west across LCA 3: Ashwicke Ridges.

Relationship with Visually Important Hillside (VIH): The viewpoint is located on the edges of the Cotswold Scarp VIH and the Ashwicke Ridges VIH.

Experienced by: Recreational users of public footpath LCA/22/10.

Figure 21.3: View Composition of Strategic Viewpoint 18



Key landscape feature

Landmark / historic feature

Detractive feature

Figure 21.4: Full Panoramic Photograph of Strategic Viewpoint 18



Strategic Viewpoint 18: Freezing Hill



Strategic Viewpoint 18 (continued)

Characteristics

Popularity, access and facilities

- Freezing Hill is a notable location for its distinctive line of mature beech trees. These are marked on Google Maps as 'Hamswell Trees' and likely to attract visitors as a result.
- The viewpoint is accessible via public footpath LCA/22/10.

Relationship with the Cotswolds National Landscape (CNL)

- The viewpoint is located within the CNL and affords panoramic views across the designated landscape.
- Views from the Cotswold Scarp are considered to be a special quality of the designated landscape, as set out in the CNL Management Plan.

Quality, value and features of the view

- An elevated viewpoint located on the edge of the Cotswold Scarp VIH and the Ashwicke Ridges VIH, providing panoramic (180°) rural views to the south, east and south-west across the steeply undulating landscape of the Ashwicke Ridges and the Lower Hamswell valley (characterised by irregular shaped pastoral fields, blocks of woodland on the slopes such as Beech Wood and a sparse settlement pattern of occasional farmsteads).
- In the view to the south-west, the wooded slopes of Hanging Hill form a notable feature. Keynsham and the urban edge of Bristol can be seen beyond the lower slopes of the hill against the prominent backdrop of Dundry Hill, providing a strong visual contrast with the sparsely populated landscape in the foreground. The profile of the Mendip Hills National Landscape (AONB) can also be seen on the distant horizon.

Chapter 21 Strategic Viewpoint 18: Freezing Hill

- Westerly views are obscured by the intervening row of beech trees, which are a distinctive landmark feature in views towards Freezing Hill from the surrounding landscape.
- A telecommunication mast on Hanging Hill slightly detracts from the overall composition of the view.

Summary

The Freezing Hill viewpoint is categorised as a SVP as it meets most of the criteria to some extent. It is a well-known viewpoint and likely to attract many visitors as a result of its distinctive row of mature beech trees; it is located on a public footpath; it allows appreciation of the Cotswold National Landscape and provides a notable view across the designated landscape; it provides a panoramic view that takes in notable landscape features of the Ashwicke Ridges (including Hanging Hill), the Lower Hamswell valley, Dundry Hill and the Mendip Hills National Landscape (AONB).

Report produced by LUC

Report produced by LUC

Bristol

12th Floor, Colston Tower, Colston Street, Bristol BS1 4XE

0117 929 1997

bristol@landuse.co.uk

Cardiff

16A, 15th Floor, Brunel House, 2 Fitzalan Rd, Cardiff CF24 0EB

0292 032 9006

cardiff@landuse.co.uk

Edinburgh

Atholl Exchange, 6 Canning Street, Edinburgh EH3 8EG

0131 202 1616

edinburgh@landuse.co.uk

Glasgow

37 Otago Street, Glasgow G12 8JJ

0141 334 9595

glasgow@landuse.co.uk

London

250 Waterloo Road, London SE1 8RD

020 7383 5784

london@landuse.co.uk

Manchester

6th Floor, 55 King Street, Manchester M2 4LQ

0161 537 5960

manchester@landuse.co.uk

landuse.co.uk

Landscape Design / Strategic Planning & Assessment

Development Planning / Urban Design & Masterplanning

Environmental Impact Assessment / Landscape Planning & Assessment

Landscape Management / Ecology / Historic Environment / GIS & Visualisation